

# High speed multipurpose refrigerated centrifuge with high through-put

## AT-1650R

AT-1650R is widely used in the fields of clinical medicine, biopharmaceutical, biochemistry, genomics, etc. It's ideal for separation and purification of blood samples in large quantities.



### Features

- > Metal cabinet, stainless steel rotor chamber, steel protective cover
- > Auto-adsorption lid lock, auto/manual can be set
- > MCB control, HD-LCD touch screen
- > Automatic stop protector for over speed, imbalance and lid open
- > AC variable frequency motor with sensor for monitoring speed
- > Timer mode is settable, this function can start the timer when the selected rotational speed is reached for reproducible centrifugation runs
- > 10 acceleration/deceleration modes are for different sample requirements
- > Soft brake function for slow acceleration and braking
- > Optimized for separation by gradient centrifugation(5 rates for option)
- > Running data can be download by USB port (optional)
- > User can lock and open lid by password, keep the samples safety
- > Environment friendly Non-CFC refrigeration
- > Precooling before centrifugal running and defrosting with lid open, compressor overheating protection
- > Parameter can be changed during running process











## Specifications



Model	AT-1650R
Max. speed	Angle rotor: 16500r/min; swing-out rotor: 4000r/min
Deviation	±1%
Max. RCF	25000 x g
Max. Capacity	Angle rotor: 100ml×4; swing-out rotor: 750ml×4
Run time setting	1-99h59min59s
Timer Mode	Started from running/setting speed
Lid open	Manual/Automatic/Password
Display	7" HD-LCD touch screen
Data download	USB port(optional)
Acceleration/deceleration	0-9 rates
Temperature range	-20℃ ~ -40℃
Precooling	Yes
Noise	≤ 65dB
Power	2500w
Dimensions	71×78×42cm
Weight	145kg


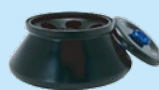
## Angle rotors

		
Max. RPM	16500r/min	15000r/min
Max. RCF	17960×g	21380×g
Capacity	2ml×12	2ml×24
Centrifugal radius	5.9cm	8.5cm
Tube	Φ11×42mm	Φ11×42mm
Adapter	0.5/1.5ml×12	0.5/1.5ml×24

		
Max. RPM	15000r/min	15000r/min
Max. RCF	25000×g	21380×g
Capacity	2ml×30	2ml×48
Centrifugal radius	9.95cm	8.5cm
Tube	Φ11×42mm	Φ11×42mm
Adapter	0.5/1.5ml×30	0.5/1.5ml×48

		
Max. RPM	13000r/min	12000r/min
Max. RCF	15100×g	14000×g
Capacity	5ml×12	10ml×12
Centrifugal radius	7.9cm	8.7cm
Tube	Φ13×53mm	Φ16×109mm
Adapter	0.5/1.5ml×12	-

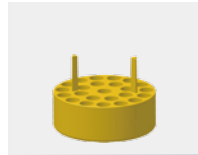
		
Max. RPM	12000r/min	12000r/min
Max. RCF	14650×g	15800×g
Capacity	15ml×8	50ml×6
Centrifugal radius	9.1cm	9.8cm
Tube	Φ16×120mm-conical	Φ28×105mm
Adapter	15ml round tube adapters×8	50ml conical tube adapters×6

		
Max. RPM	12000r/min	8000r/min
Max. RCF	15800×g	7000×g
Capacity	50ml×6	100ml×4
Centrifugal radius	9.8cm	9.8cm
Tube	Φ28×118mm-conical	Φ38×119mm
Adapter	1、15ml×6。2、50ml round tube adapters×6	-

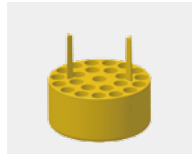
## 750ml Rotors and Adapters



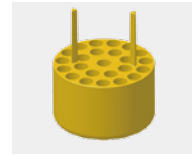
Aerosol-tight rotor with biocontainment caps  
 Max. RPM: 4000r/min  
 Max. RCF: 3500×g  
 Capacity: 750ml×4  
 Centrifugal: 22.5cm



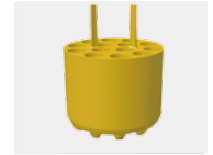
2ml×168  
Φ11×42mm



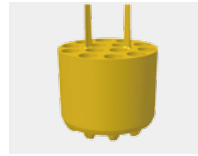
5ml×96  
Φ13×53mm



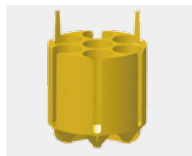
Blood tube×96  
Φ13×106mm



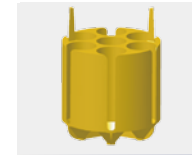
10ml×56  
Φ16×113mm



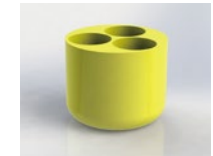
15ml×56  
Φ16×120mm



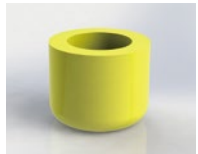
50ml×28  
Φ28×118mm



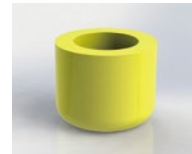
50ml×28  
Φ28×105mm



100ml×12  
Φ41×119mm



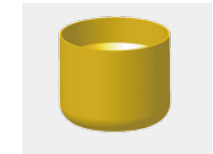
250/300ml×6  
Φ61.5×126mm



400ml×4  
Φ80×122mm



500ml×4  
80×140mm




500ml×4  
95×152mm


## 500ml Rotors and Adapters



Rotor type:-horizontal rotor  
 Max. RPM: 4000r/min  
 Max. RCF: 3400×g  
 Capacity: 500ml×4



Name: Air-tight test tube  
500ml×4



Name: Round Cup Test Tube  
500ml×4



Blood tube×52  
Φ13×105mm



10ml×48  
Φ16×109mm



15ml×32  
Φ16×115mm



15ml×32  
Φ16×120mm



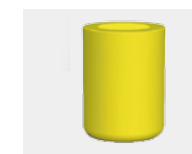
50ml×12  
Φ28×105mm



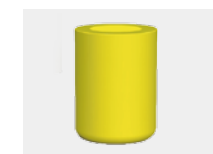
50ml×12  
Φ28×119mm



30ml×18  
Φ25.5×101.4mm



100ml×4  
Φ38×119mm




250ml×4  
Φ61.8×127.7mm


## Microplate Rotor



Microplate Rotor  
 Max. RPM: 4000r/min  
 Max. RCF: 2100×g  
 Capacity: 96-well microtiter plate × 2  
 Centrifugal: 11.7cm



0.5ml×120  
Φ6.5×30mm



0.2mlPCR×8×12  
0.2mlPCR-8