

CryoExpress Series portable ULT freezer

CryoExpress ONE

Antech CryoExpress series ultra low temperature portable freezer is compact in size, light in weight, and powerful in cooling.

Taking advantages of advanced Stirling cooling technology, CryoExpress series offer wide range accurate temperature control, from ambient temperature to -86°C ultra low temperature, which can be used for transportation of biological sample, vaccine, pharmacy, etc.

The portable freezer can be powered with 12~24V DC on a moving vehicle or vessel. Since a built-in lithium battery is supplied, it even works for certain time without any external power supply, so that the positive cooling continues from vehicle to freezer at destination.

By using adapter, CryoExpress series freezer can be powered and charged with 100~240V AC power supply.



▶ Electric door lock (NFC card)



▶ Space for 100-place cryogenic box



▶ Advanced Stirling cooling technology



▶ USB port for data download



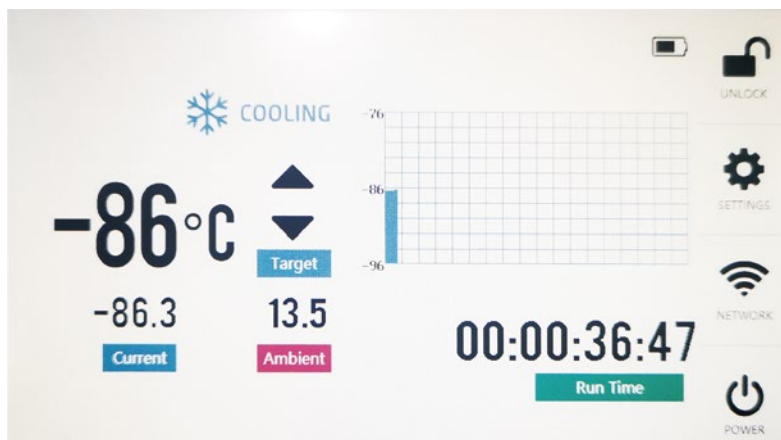
▶ Built-in lithium battery



▶ Large handle for convenient movement



Touch screen controller



- Set temperature
- Inner cabin temperature
- Ambient temperature
- Temperature graph
- Running time
- Battery status
- Door lock status
- Settings
- Network status
- Power button

Specification

Model	CryoExpress ONE	
Performance	Temperature range	-86°C ~ ambient
	Climate type	SN/N
	Cooling system	Free-piston Stirling engine cooler
	Controller	Touch screen
	Door lock	NFC electric lock & manual lock
	Data memory	Temperature record & USB port
	Insulation	Vacuum insulation panel & polyurethane foam
Capacity & size	Capacity	1 Liter
	2ml vials capacity	100 pcs (81/100-place cryogenic box)
	External dimensions, W x D x H	270 x 311 x 450mm
	Internal dimensions, W x D x H	150 x 134 x 55mm
	Net weight	13.5kg
Power	Power supply	DC 12~30V; AC 100~240V, 50/60Hz
	Rated power	80W
	Power cord	AC adapter & power cord, DC power cord
	Backup battery (standard)	Built-in lithium battery, 1-hour working time
	Backup battery (optional)	External lithium battery, 4-hour working time