

Low speed multipurpose centrifuge with high capacity

AT-750/750R

AT-750/750R is widely used in the fields of clinical medicine, biopharmaceutical, biochemistry, genomics, etc. It's ideal for separation and purification of blood samples in large quantities.



Features

- > Metal cabinet, stainless steel rotor chamber, steel protective cover
- > Auto-adsorption lid lock, auto/manual can be set
- > MCB control, HD-LCD touch screen
- > Automatic stop protector for over speed, imbalance and lid open
- > AC variable frequency motor with sensor for monitoring speed
- > Timer mode is settable, this function can start the timer when the selected rotational speed is reached for reproducible centrifugation runs
- > 10 acceleration/deceleration modes are for different sample requirements
- > Soft brake function for slow acceleration and braking
- > Optimized for separation by gradient centrifugation(5 rates for option)
- > Running data can be download by USB port (optional)
- > User can lock and open lid by password, keep the samples safety
- > Parameter can be changed during running process

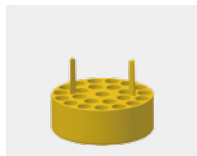




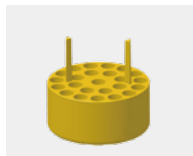
Specifications

Model	AT-750	AT-750R
Max. speed	4000r/min	
Deviation	±2.5%	
Max. RCF	3500 x g	
Max. Capacity	swing-out rotor: 750ml×4	
Run time setting	1-99h59min59s	
Timer Mode	Started from running/setting speed	
Lid open	Manual/Automatic/Password	
Display	7' HD-LCD touch screen	
Data download	USB port(optional)	
Acceleration/deceleration	0-9 rates	
Data query and export function	Yes	
Noise	≤ 68dB	≤ 65dB
Power	2500w	
Dimensions	71×60×42cm	71×78×42cm
Weight	85kg	145kg

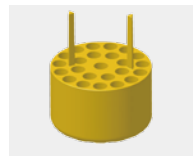
750mlswing-buckets rotor/adpaters



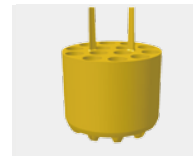
2ml×168
Φ11×42mm



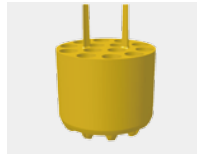
5ml×96
Φ13×53mm



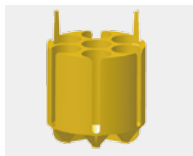
Blood tube×96
Φ13×106mm



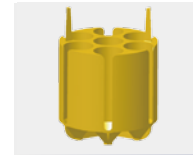
10ml×56
Φ16×113mm



15ml×56
Φ16×120mm



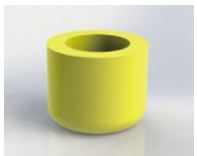
50ml×28
Φ28×118mm



50ml×28
Φ28×105mm



100ml×12
Φ41×119mm



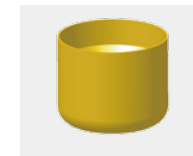
250/300ml×6
Φ61.5×126mm



400ml×4
Φ80×122mm

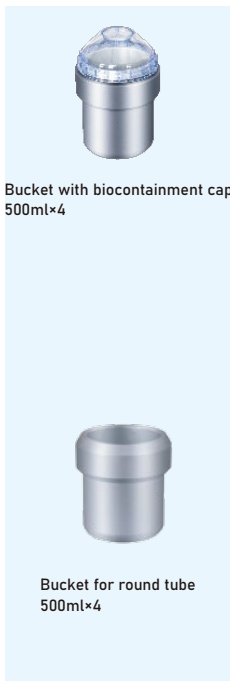


500ml×4
80×140mm



500ml×4
95×152mm

500mlswing-buckets rotor/adpaters



Blood tube×52
Φ13×105mm



10ml×48
Φ16×109mm



15ml×32
Φ16×115mm



15ml×32
Φ16×120mm



50ml×12
Φ28×105mm



50ml×12
Φ28×119mm



30ml×18
Φ25.5×101.4mm



100ml×4
Φ38×119mm



250ml×4
Φ61.8×127.7mm

Swing-out rotor for ELISA plate

