

Biological Safety Cabinet

2 Feet Tabletop, Class II, Type A2



**Compact
Design**

Airtech class II type A2 biological safety cabinet airflow ratio is 70% recirculation and 30% exhaust, providing the protection to operator, sample and environment from biological hazards and contamination.

It equips with DC ECM motor for 60% energy saving, HEPA (H14) filter efficiency 99.995% @ 0.3 micron which conforms EU standard EN1822 and Japan velocity sensor for accurate control and display accuracy at 0.001m/s. ULPA (H15) filter is available upon request.

Features

Smart control:

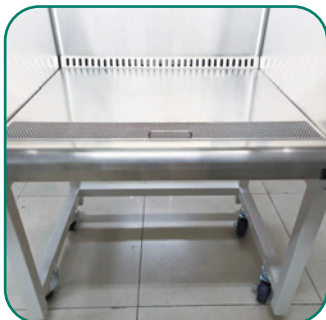
- ▶ The full-color LCD screen displays parameters, including: downflow & inflow air velocity, filter service life, blower operation status & alarm.
- ▶ DC blower with intelligent constant air volume compensation system: when the HEPA filter resistance increases by 50%, the inflow air volume change is less than 10%, ensuring safe operation in the entire life span of filter.
- ▶ The blower and sliding door linkage design, when the sliding window reaches working position, the blower starts working automatically.

Humanized structure:

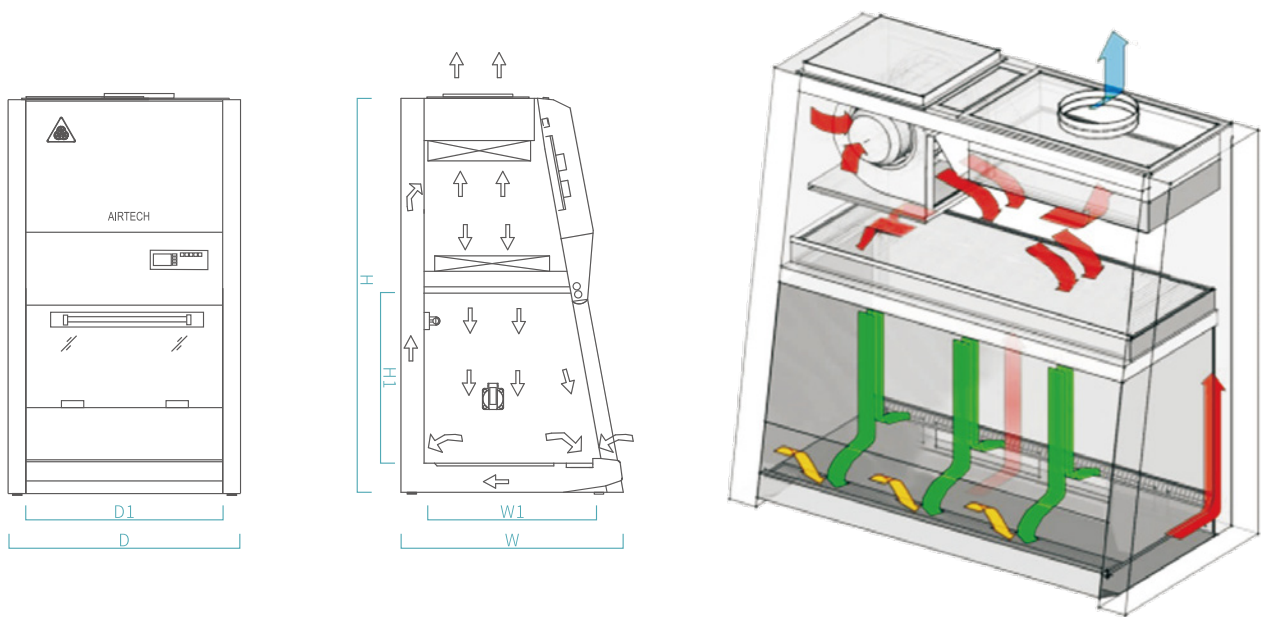
- ▶ Compact design for limited space, can be placed on desktop with flexibility.
- ▶ Optimized sliding window lifting and positioning system can be used safely under severe conditions.
- ▶ 10° sloped front design
- ▶ Demountable circular-arc armrest
- ▶ Fully finished SUS304 working area
- ▶ Equipped with anti-splash safety socket
- ▶ Optional water valve & vacuum valve
- ▶ Optional stand

Safe and reliable:

- ▶ The sliding window is interlocked with LED light and UV lamp.
- ▶ The high-efficiency filter is made with imported filter material, achieving large dust holding capacity and high uniformity.
- ▶ Negative pressure surrounding double-layer cabinet, “leakage resistance” and “unobstructed return air” technology.
- ▶ Strict cabinet leak prevention testing & filter integrity testing.



STRUCTURE



TECHNICAL SPECIFICATIONS

Model	BSC-65411A2
Nominal Size	0.65meter(2')
Filtration Efficiency	≥99.995%, @0.3μm
Downflow Velocity	0.33m/s
Inflow Velocity	0.53m/s
Noise	≤60dB(A)
Vibration	≤5μm(center of table top)
Power Supply	AC220~240V, 1Φ, 50/60Hz
Opening Height	200mm
Personnel Protection	A.Total colony in impaction samplers≤10CFU./time B.Total colony in slot samplers≤5CFU./time
Product Protection	Total colony in culture dish≤5CFU./time
Cross-consumption Protection	Total colony in culture dish≤2CFU./time
Max Consumption(with spare socket)	0.18kVA
Rated Power(without spare socket)	0.15kVA
Weight	110kg
Workzone Dimension(W1xD1xH1)	650x562x540mm
Overall Dimension(WxDxH)	750x700x1200mm
Size and Qty. of Light	LED13.5Wx①
Size and Qty. of UV Light	8Wx①
Illumination	≥900Lx
Cabinet Materials	High-grade steel and lacquered in ivory
Working Area Materials	SS304 fully finished
Air Direction	Top out



Antech Group Inc.

Tel: +86 532 87890321

Email: info@antechscientific.com

Web: www.antechscientific.com