



LAB MONITORING SYSTEM

KNOWING MATTERS

INTRODUCTION

ANTECH Scientific offers cloud-based lab monitoring system to monitor key parameters of sample preservation, device working status and environment

Model	Monitoring parameter	Application	BioExpress Cloud platform
CryoMonitor 1000TL	Temperature, LN2 level	LN2 container	Optional
CryoMonitor 1000T	Temperature	LN2 container	Optional
CryoMonitor 2000TL	Temperature, LN2 level	LN2 container	Optional
CryoMonitor 2000TF	Temperature	Freezer	Optional
CryoMonitor 2000TC	Temperature, CO2 concentration	CO2 incubator	Optional
CryoMonitor 2000Y	O2 concentration	Environment	Optional

SYSTEM

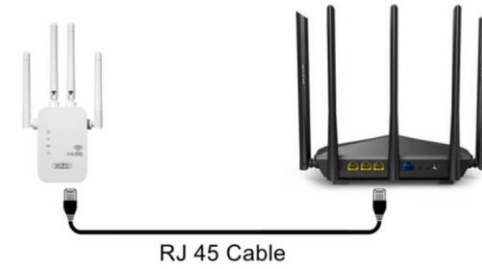


Cryomonitor series



Relay

Gateway



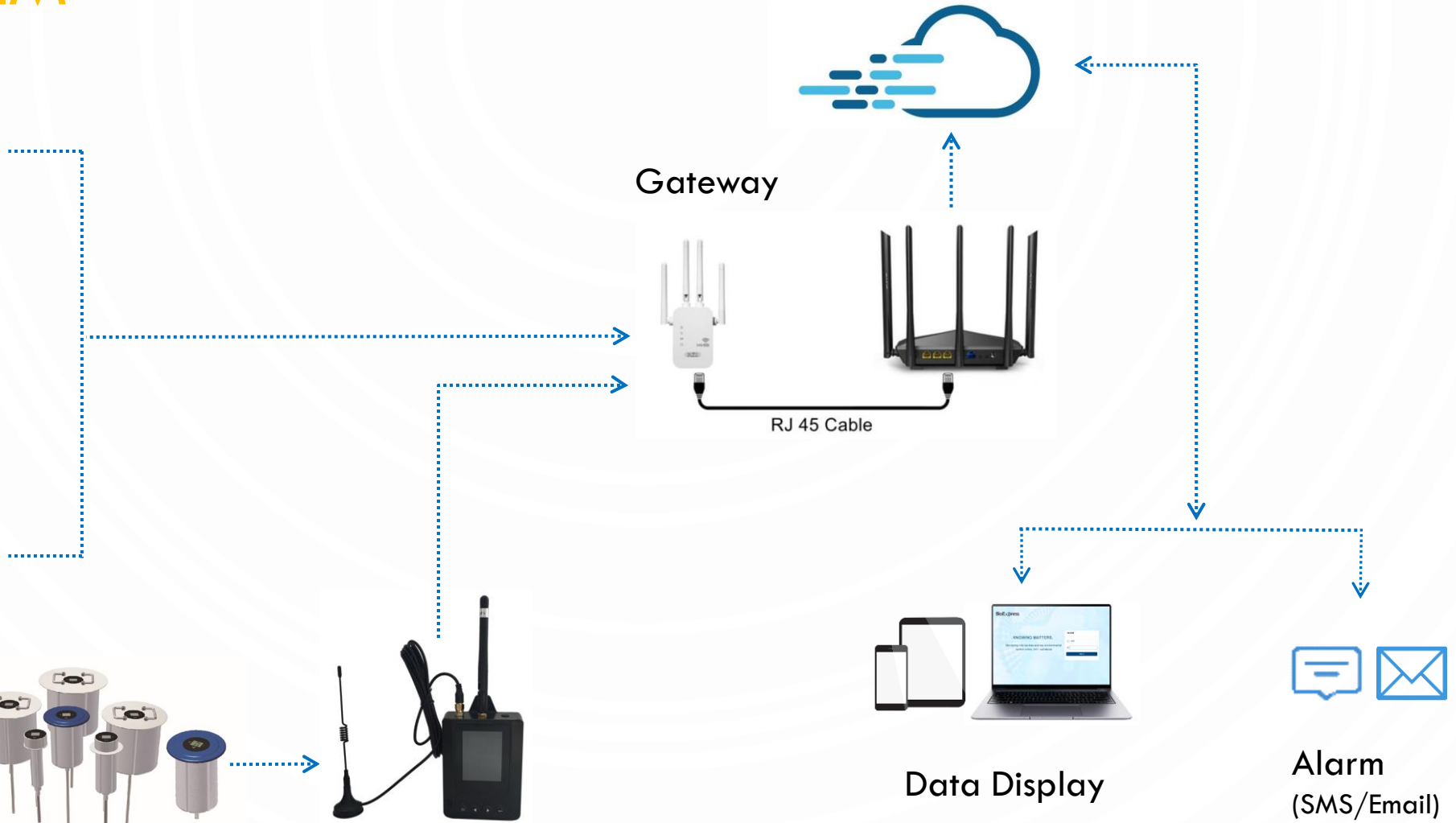
RJ 45 Cable



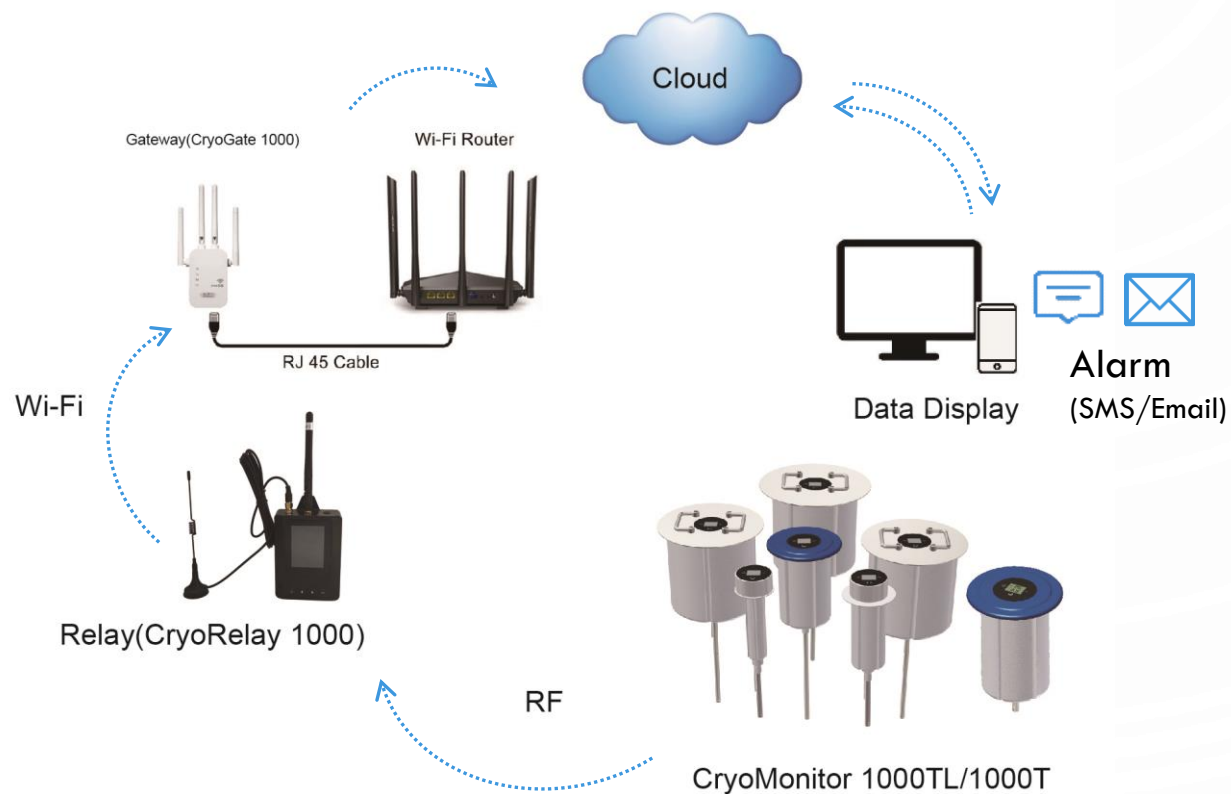
Data Display



Alarm
(SMS/Email)



CRYOMONITOR 1000 SERIES



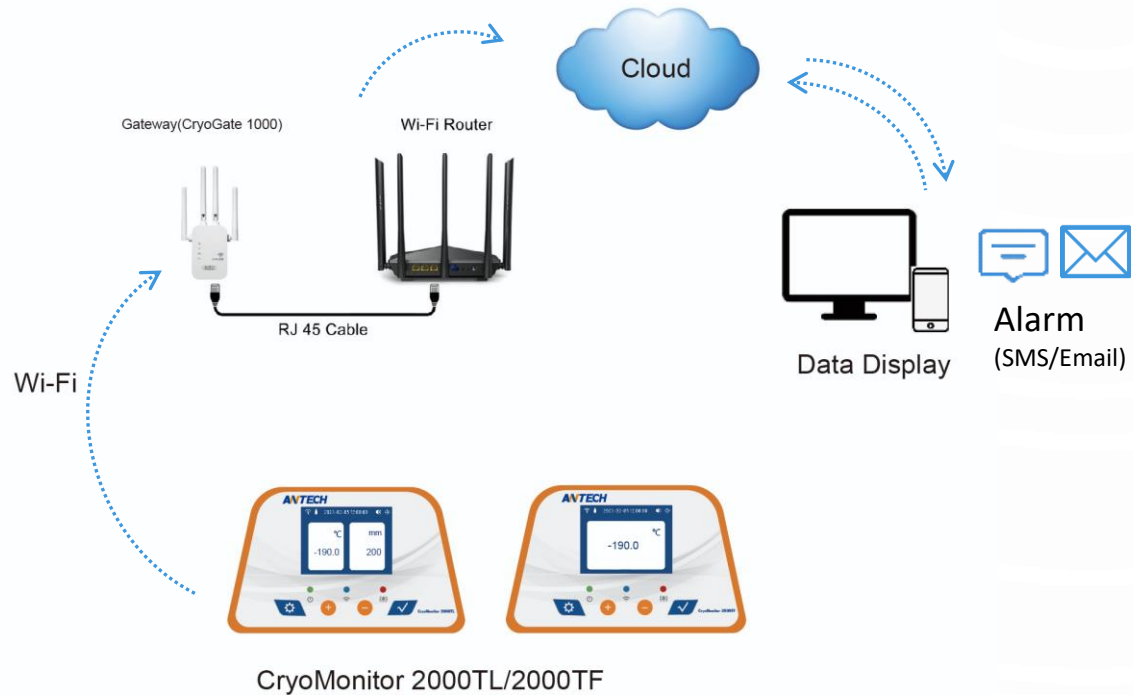
Device	Description
CryoMonitor 1000TL	Smart cap, temperature & liquid nitrogen level monitor
CryoMonitor 1000T	Smart cap, temperature monitor
CryoRelay 1000	Relay, automatic wireless connecting CryoMonitor 1000TL/T & CryoGate 1000, supporting up to 30 monitoring devices in the same room.
CryoGate 1000	Gateway for Wi-Fi connection, automatic wireless connection with CryoRelay 1000

CASE STUDY

The IVF center has 10 units of LN2 containers to be monitored in one room. Below devices will be required:

Device	Qty
CryoMonitor 1000TL	10
CryoRelay 1000	1
CryoGate 1000	1 (if online monitoring needed)
BioExpress cloud service	10 (if online monitoring needed)
Wi-Fi Router	1 (if online monitoring needed, prepare & installed by user)

CRYOMONITOR 2000 SERIES



Device	Description
CryoMonitor 2000TF	Temperature monitor for refrigerators & freezers
CryoMonitor 2000TL	Temperature & LN2 level monitoring for LN2 containers.
CryoMonitor 2000Y	O2 concentration monitoring for environment.
CryoMonitor 2000TC	Temperature, CO2 concentration monitoring for CO2 incubators.
CryoGate 1000	Gateway for Wi-Fi connection, automatic wireless connection with up to 30 pcs of CryoMonitor 2000 series monitoring devices in the same room.

CASE STUDY

A lab has 5 units of LN2 containers & 10 units of freezers to be monitored in one room. Below devices will be needed:

Device	Qty
CryoMonitor 2000TL	5
CryoMonitor 2000TF	10
CryoGate 1000	1 (if online monitoring needed)
BioExpress cloud service	15 (if online monitoring needed)
Wi-Fi Router	1 (if online monitoring needed, prepare & installed by user)

BIOEXPRESS PLATFORM



HOME PAGE

BioExpress

Home

Device 2 | SMS 50 | Voice 0 | TEST01

Home

Notice:

Organization Update Time: 2023-12-26 07:49:26 Refresh

Device Name	Serial	Time	Status	Temperature (°C)	LN2 Level (mm)
CryoMaster 6000_2	3221150222	14:20:42	Offline	9.3	0
CryoMaster 6000_1	3221150221	14:21:22	Offline	8.4	0

Navigation Menu:

- Home
- Devices
- Alarms
- Data
- Tools
- Setting
- Account
- Technical Support

GRAPH

☰ Data Chart

CryoMonitor 2000TL_1 [2023120601]

Temperature: -182.9 °C LN2 Level: 104 mm Time: 2023-12-11 17:29:08

✕

1H

2H

3H

5H

12H

1 Day

1 Week

Custom Time



显示最值

🔍 Search

🖨️ Print

📄 Export

Temperature: max(-182.9 °C) min(-182.9 °C) L: max(105 MM) min(100 MM)

Temperature °C

-170
-175
-180
-185
-190
-195

2023-12-06 17:00:10 2023-12-07 10:06:29 2023-12-08 03:12:47 2023-12-08 20:19:05 2023-12-09 13:25:20 2023-12-10 06:31:35 2023-12-11 00:02:50 2023-12-11

LN2 Level mm

600
500
400
300
200
100

2023-12-06 17:00:10 2023-12-07 10:06:29 2023-12-08 03:12:47 2023-12-08 20:19:05 2023-12-09 13:25:20 2023-12-10 06:31:35 2023-12-11 00:02:50 2023-12-11

SET ALARM VALUE

☰ Add Alarm



Lower Limit of Temperature

Lower Limit of Temperature

Upper Limit of Temperature

Upper Limit of Temperature

Lower Limit of Liquid level

Lower Limit of Liquid level

Upper Limit of Liquid level

Upper Limit of Liquid level

Alarm Time

Alarm Time



* Status

Enable



* Language

English



* Trigger Mode



Default



Multiple Times

2



First Alarm



Delayed by

20

Mins

* Alarm Notification

Cancel

Submit

SET ALARM PROJECT (EMAIL, SMS)

BioExpress

- Home
- Devices
- Alarms
- Alarm Project**
- Alarm History
- Data

Home / Alarms / Alarm Project

Device 1 | SMS 25 | Voice 0 | test01

Home | Devices | Alarm Project

Project: [Search](#) [+ Add](#)

Name	Type of Alarm	Value	Status	Editing Time	Operating
CryoMonitor 2000TL-1_SMS	SMS	15898888131	Enable	2023-12-11 16:0	Delete Edit
CryoMonitor 2000TL-1_email	E-Mail	info@antechscientific.com	Enable	2023-12-08 13:5	Delete Edit

Total 2 items | 10 /page | Goto 1

ALARM HISTORY

BioExpress

- Home
- Devices
- Alarms
- Alarm Project
- Alarm History**
- Data
- Tools
- Setting
- Account
- Technical Support

Home / Alarms / Alarm History

Device 1 SMS 25 Voice 0 test01

Home Devices Alarm Project Alarm History

Keyword: Alarm Type: All Alarms Account Current Acco Alarm Time:

Select Alarm Time Range

<input type="checkbox"/>	Device	Recipient	Alarm Time	Alarm Data	Operation
<input type="checkbox"/>	CryoMonitor 2000TL_1[2023120601]	CryoMonitor 2000TL-1_email,CryoMonitor 2000TL-1_SMS	2023-12-10 22:21:45	Temp:-182.9°C	<input type="button" value="Delete"/> <input type="button" value="Processing"/>
<input type="checkbox"/>	CryoMonitor 2000TL_1[2023120601]	CryoMonitor 2000TL-1_email,CryoMonitor 2000TL-1_SMS	2023-12-10 22:20:46	Temp:-182.9°C Liquid level:102ml	<input type="button" value="Delete"/> <input type="button" value="Processing"/>
<input type="checkbox"/>	CryoMonitor 2000TL_1[2023120601]	CryoMonitor 2000TL-1_email,CryoMonitor 2000TL-1_SMS	2023-12-10 22:19:46	Temp:-182.9°C Liquid level:102ml	<input type="button" value="Delete"/> <input type="button" value="Processing"/>
<input type="checkbox"/>	CryoMonitor 2000TL_1[2023120601]	CryoMonitor 2000TL-1_email,CryoMonitor 2000TL-1_SMS	2023-12-10 22:18:46	Temp:-182.9°C Liquid level:102ml	<input type="button" value="Delete"/> <input type="button" value="Processing"/>

ACCOUNT MANAGEMENT

≡ Add User



i The Initial Password is 8888899999

* Username(Letters, Numbers, and Symbols @ .)

test01.2

* Name

test01.2

Phone

Please Enter the Phone Number

E-Mail

Please Input Your E-Mail

Select Organization

Select Organization

Select

Remark

Please Enter a Remark

≡ Menu Permission Settings [test01.1]

- System
 - Devices
 - Devices
 - Gateways
 - Alarm Devices
 - Alarms
 - Alarm Project
 - Alarm History
 - Datas
 - Daily Report
 - Search Data
 - Data Output
 - Data Chart
 - Tools
 - Sensor Tools
 - Gateway Tools
 - Alarm Tools
 - Setting
 - Login log
 - Operate log
 - Account
 - Change Password

≡ Operation Permission Settings [test01.1]

- System
 - Devices
 - Edit Device
 - View Data Chart
 - Print Data Chart
 - Manage Alarm Settings
 - treecode.caozuo.triggerdetailsedit
 - Alarms
 - Manage Alarm History
 - Delete Alarm History
 - Datas
 - Data Output
 - Search Data
 - Daily Report
 - Tools
 - Calibration Sensor

A gloved hand in a blue nitrile glove is holding a metal pipette tip over a clear microcentrifuge tube. The tube has a blue cap and contains a pink liquid sample. The tube has volume markings: 0.5, 1.0, and 1.8 ml. The background is a blurred laboratory setting with a white surface. The image is overlaid with a blue semi-transparent banner containing text. There are also decorative blue circuit-like patterns on the left and right sides of the image.

**GET YOUR PRECIOUS SAMPLES PROTECTED
NOW.**

info@antechscientific.com
www.antechscientific.com